

# Survive-All™ Series

NEMA-4X Certified  
for Harsh Environment Applications



**EMERGI-LITE**

Full Range Emergency Lighting Solutions



## Introducing the complete family of Survive-All™ NEMA-4X emergency lighting products for harsh environment applications

The new standard for emergency lighting in harsh environments has arrived. Battery units, remote fixtures, exit signage and combo units – Emergi-lite is proud to introduce a complete family of NEMA-4X Certified emergency lighting products that delivers impressive, state-of-the-art illumination in a visually-appealing package.

A complete emergency lighting solution, these products are designed for use in a wide range of commercial and industrial environments where humidity, dust, water infiltration, and the risk of vandalism are specification criteria.

UNRIVALLED PATHWAY ILLUMINATION –  
70 FEET CENTER-TO-CENTER  
(see photometric data on back cover)



### Battery Unit - Survive-All™ NXM Series

- Fully gasketed cast aluminum back plate with clear UV resistant polycarbonate cover
- Long-life, maintenance-free sealed lead acid battery
- Choice of MR16 halogen lamps up to 12V, 20W or high-efficiency, 5-Watt, MR16 LED lamps
- Mounting: wall mount
- Unit capacity: up to 108W
- Suitable for cold weather applications – -40°C (CW option)



### Remote Fixtures - Survive-All™ EF39 Series

- Choice of single or double head models
- Fully gasketed cast aluminum back plate with clear UV resistant polycarbonate cover
- Choice of MR16 halogen lamps up to 24V, 20W or high-efficiency, 5-Watt, MR16 LED lamps



## Applications

- Hosedown areas / car washes
- Food processing / preparation facilities
- Marine locations
- Chemical plants
- Schools and other public facilities
- Parking garages
- Transit platforms
- Sports arenas / swimming pools
- Security areas / prisons
- Warehouse and cold storage facilities
- Heavy industrial facilities

## Certifications

- CSA Certified for 30 minutes of emergency operation
- Exit signs meet or exceed C860-01 and NRCAN/C860-01 requirements
- NEMA-4X Certified for high abuse areas, wet locations and cold weather (-40°C) applications
- NSF Certified for use in food processing plants

## Features

- Battery units and remote fixtures deliver unsurpassed pathway illumination – 70 feet, center-to-center (see photometric data on back cover)
- Fully gasketed enclosures prevent water infiltration
- Vandal-resistant enclosures - resist dents, peeling and corrosion
- All units come with tamper-proof screws and bits
- UV resistant enclosures
- Choice of colours – factory white, black and grey
- Continuous self-diagnostic monitoring and monthly self-testing
- Fully automatic, solid state charger
- Non-intrusive magnetic test switch
- NEXUS® compatible



## Combo Unit - Survive-All™ LPEX600-N Series

- Innovative, field-adjustable lamp head assembly
- Choice of MR16 halogen lamps up to 12V, 12W or high-efficiency, 5-Watt, MR16 LED lamps
- Long life, energy efficient ALINGAP technology red LED illuminated EXIT legend
- Can be wall or ceiling mounted
- Double face available
- Suitable for cold weather applications – -40°C (CW option – available in 6V only)



## Exit Sign - Survive-All™ LPEX600 Series

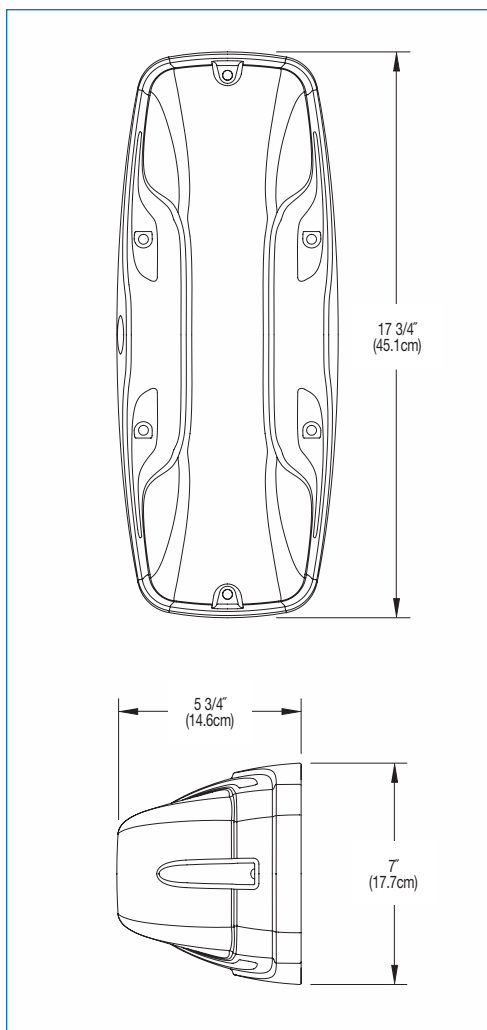
- Sealed heavy-duty, vandal-resistant polycarbonate faceplate
- Suitable for cold weather -40°C (AC/DC model) and -25°C on self-powered model (CW option)
- Long-life, energy-efficient ALINGAP technology red LED light source
- Energy efficient – consumes less than 3 watts in AC or DC mode

# Survive-All™ NXM Series

## NEMA-4X Certified Battery Unit



### Dimensions



### Features

#### Standard

- Delivers unsurpassed pathway illumination – 70 feet, center-to-center (see photometric data on back cover)
- Fully gasketed cast aluminum back plate with clear polycarbonate cover – NEMA-4X Certified
- Choice of three colours: factory white, black or grey
- Comes standard with non-audible advanced diagnostic charger board, 10 minute time delay and lamp disconnect
- Audible warning and time delay functions can be enabled or disabled during installation
- Micro-controller diagnostic system tests, detects and indicates battery, charger circuitry or MR16 lamp failures
- Non intrusive magnetic test switch
- High efficiency MR16 lamps, up to 20W
- Long-life, maintenance free sealed lead acid battery
- 1/2" rigid conduit entry on top and back
- Can be installed on 4-inch junction boxes
- Comes standard with tamper-proof screws and bit
- Standard 120/347Vac input voltage
- NSF Certified for food processing plants
- CSA C22.2 No. 141 Certified

#### Optional

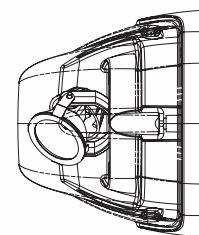
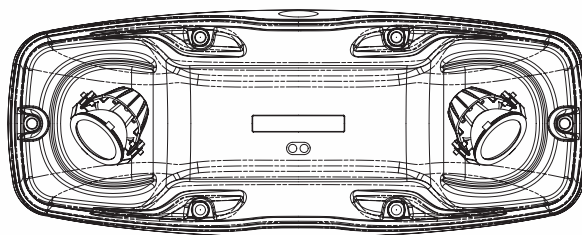
- NEXUS® compatible (for more information on NEXUS®, please consult factory)
- Universal bracket (for mounting on poles, I-beams or Superstrut® metal framing)
- Cold weather option (-40°C)



NEMA-4X



NEXUS



### Ordering Information

Series	Colour	Capacity	A.C. Voltage	Options	# of Heads	Lamps
06NXM= 6 volts, NEMA-4X	B= black	36= 6V-36W	Blank= 120/347Vac	Blank= no options	/2= 2 heads	MI= mini halogen, 6V-6 watts, MR16
	W= factory white	72= 12V-72W	-2= 277Vac	CW1= cold weather 120Vac		MJ= mini halogen, 6V-10 watts, MR16
12NXM= 12 volts, NEMA-4X	G= grey	108= 12V-108W		*CW3= cold weather 347Vac		MK= mini halogen, 12V-12 watts, MR16
				**NEX= NEXUS system interface		MA= mini halogen, 12V-20 watts, MR16
EXAMPLE: 06NXMW36/2MI						L= 12V-5W LED

\* Available in 6V only.

\*\*Not all options available with NEXUS. Consult factory.

# Survive-All™ EF39 Series

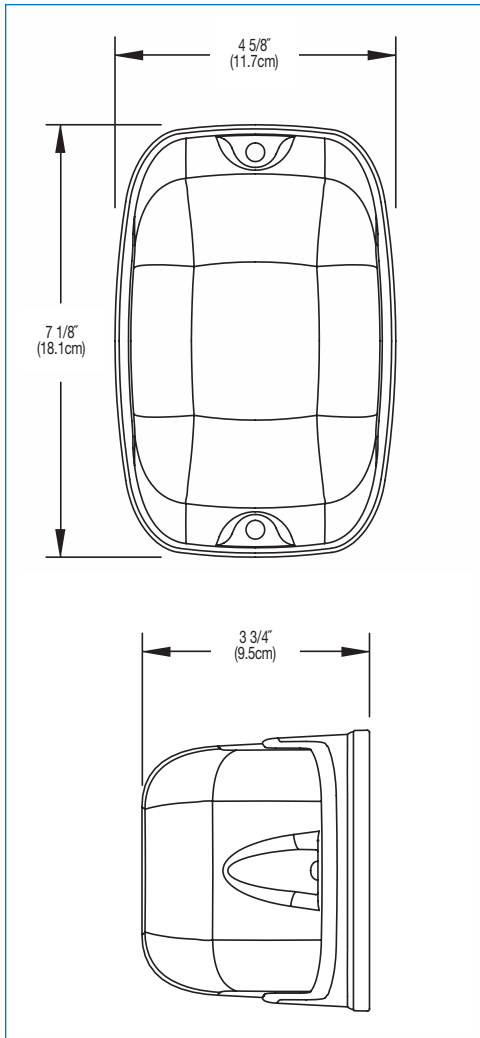
NEMA-4X Certified Remote Fixture



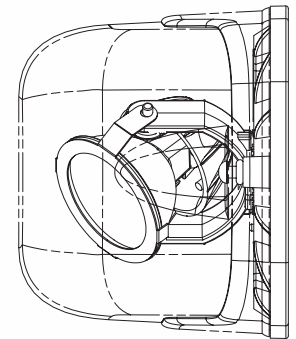
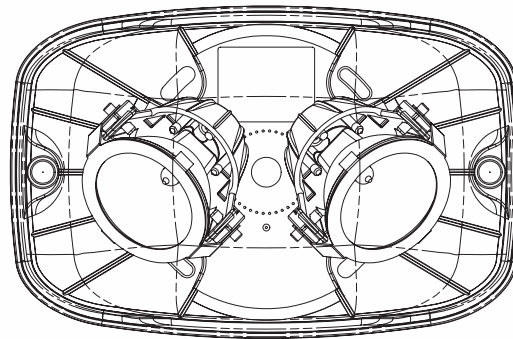
## Features

- Delivers unsurpassed pathway illumination – 70 feet, center-to-center (see photometric data on back cover)
- Fully gasketed cast aluminum back plate with clear polycarbonate cover – NEMA-4X Certified
- UV and impact resistant cover
- Choice of three colours: factory white, black or grey
- Choice of single or double head models
- Available in 6, 12 and 24 volts models with various wattages
- High efficiency MR16 lamps up to 20W
- Easy installation on four-inch octagonal box
- Tool-less lamp aiming
- Easy lamp replacement
- Comes standard with tamper-proof screws and bit
- NSF Certified for food processing plants
- CSA Certified to C22.2 No. 9

## Dimensions



NEMA-4X



## Ordering Information

Series	# of Heads	Lamp Type	Colour	Voltage/Wattage
EF39= NEMA-4X	Blank= one head	M= MR16	Blank= factory white	-6V6W= 6V-6 watts, MR16
	D= two heads		-B= black	-6V10W= 6V-10 watts, MR16
			-G= grey	-12V12W= 12V-12 watts, MR16
				-12V20W= 12V-20 watts, MR16
				-24V20W= 24V-20 watts, MR16
				-L= 12V-5 watts, LED

EXAMPLE: EF39M-6V6W

# Survive-All™ LPEX600-N Series NEMA-4X Certified Combo Units



## Features

### Standard

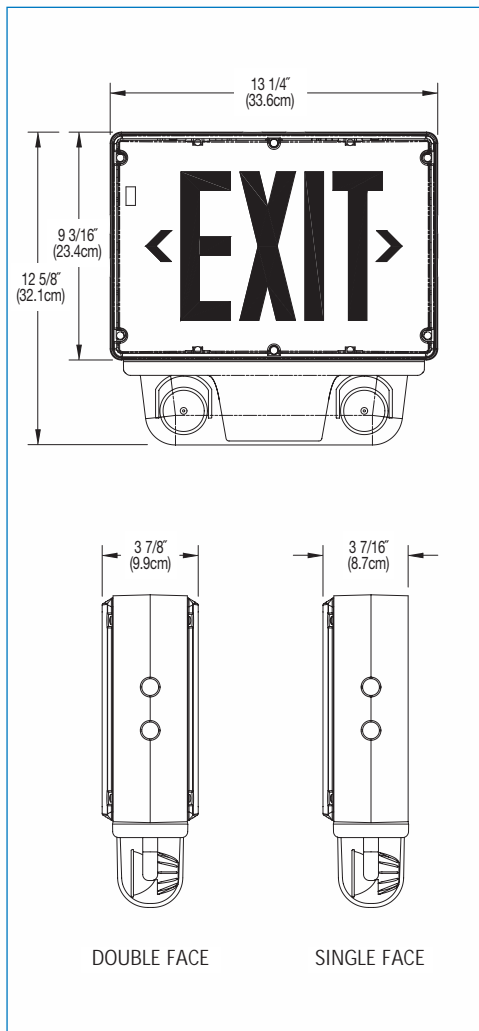
- NEMA-4X Certified for wall or ceiling mount
- High efficiency MR16 halogen lamps up to 12V, 12W or 12V, 5W white LED, MR16 emergency lights
- Uniform ALINGAP technology LED illuminated legend
- Comes standard with non-audible advanced diagnostic charger board, 10 minute time delay and lamp disconnect
- Audible warning and time delay functions can be enabled or disabled
- Micro-controller diagnostic system tests, detects and indicates battery, charger circuitry, LEDs or MR16 lamp failures
- Sealed, maintenance-free nickel cadmium battery
- Non-intrusive magnetic test switch
- Choice of grey, white or black housing and face
- NSF Certified for food processing plants
- CSA Certified, meets or exceeds C860-01 and NRCAN/C860-01 requirements
- CSA C22.2 No. 141 Certified

### Optional

- Double face
- Cold weather (-40°C)
- No heads (for more remote capacity)
- Fire alarm activated flasher
- Flasher/buzzer (AC power failure)
- Flasher (AC power failure)



## Dimensions



NEMA-4X



## Power Consumption

Power-Pack	AC Specs		DC Specs	
N3	120/347Vac	Less than 10W	6V-36W	Min. 30 minutes
N6A	120/347Vac	Less than 10W	12V-60W	Min. 30 minutes

## Wire Guards

With heads		Without heads	
460.0078	Wall Mount	460.0079	Wall Mount
460.0060	Ceiling Mount	460.0028	Ceiling Mount

## Ordering Information

Series	Faces	Housing/Face Colour	Voltage	Powerpack	Options	# of Heads	Lamp/Wattage
LPEX60=	2= single face	WW= factory white/white	Blank= 120/347Vac	-N3= 6V-36W	Blank= no options	Blank= 0 head	MI= MR16, 6V-6W
NEMA-4X	3= double face	WB= factory white/black	-2= 120/277Vac	-N6A= 12V-60W	*CW= cold weather (-40°C)	/2= two heads	MJ= MR16, 6V-10W
		BB= black/black			FA= flasher (fire alarm activated)		MK= MR16, 12V-12W
		BW= black/white			F/B= flasher/buzzer (AC power failure)		L= LED, 12V-5W
		GG= grey/grey			FL= flasher (AC power failure)		
		GW= grey/white			G= green letters		
		GB= grey/black					

EXAMPLE: LPEX602WW-N3CW/2MI

\* Available in single face, 6V-36W only  
(add 10W of power consumption for this option).

# Survive-All™ LPEX600 Series NEMA-4X Certified Exit Sign

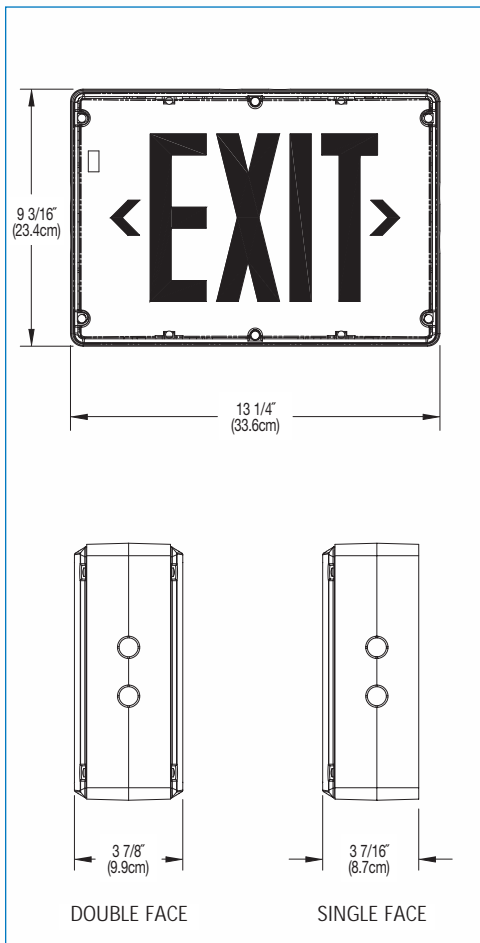


## Features



- Polyvinyl chloride enclosure is fully gasketed around lens and canopy to prevent water infiltration – NEMA-4X Certified
- Sealed faceplate of heavy-duty, vandal-resistant polycarbonate with evenly illuminated legend
- Suitable for cold weather: -40°C for AC/DC models and -25°C for self-powered ("CW" option)
- Tamper-resistant magnetic test switch
- Self-diagnostic circuitry standard on all self-powered models
- Sealed, maintenance-free, nickel cadmium batteries for superior performance and long life
- Provides 90 minutes of emergency operation (consult factory for longer operation)
- Long-life, energy-efficient ALINGAP red LED light source
- Energy efficient – consumes less than 3 watts in AC or DC mode
- Normal AC and emergency DC operation – 120 to 347 volts universal AC 2 wire input; 6 to 48 volts universal DC
- Also available with power pack; see LPEX600-N combo unit
- NSF Certified for food processing plants
- CSA Certified, meets or exceeds C860-01 and NRCAN/C860-01 requirements
- The self-powered version is CSA C22.2 No. 141 Certified

## Dimensions



NEMA-4X



## Power Consumption

Model	AC Specs		DC Specs	
AC/DC red	120 to 347Vac	Less than 3W	6 to 48Vdc	Less than 2W
AC/DC green	120 to 347Vac	Less than 3W	6 to 48Vdc	Less than 2W
Self-powered red	120 to 347Vac	Less than 3W	NiCad battery	Min. 90 minutes
Self-powered green	120 to 347Vac	Less than 3W	NiCad battery	Min. 90 minutes

## Wire Guards

460.0079	Wall Mount
460.0027	End Mount
460.0028	Ceiling Mount

## Ordering Information

Series	Faces/Mounting	Housing/Faceplate Colour	Voltage	Options	Cabinet
LPEX60= C860 approved	2= single face, universal mount 3= double face, universal mount	WW= factory white/white	U= universal 120-347Vac, 6-48Vdc	Blank= no options	4X= approved NEMA-4X
		BB= black/black		G= green letters	
	BW= black/white	ID= 120-347Vac, self-powered c/w diagnostics (non-audible)	FA= fire alarm activated flasher		
	WB= factory white/black		EM120-2W= 120Vac, 120Vdc 2 wires (AC only)	FB= flasher/buzzer*	
	GG= grey/grey		CW= cold weather (-25°C for self-powered, -40°C for AC/DC)		
	GW= grey/white				
GB= grey/black					

EXAMPLE: LPEX602WWU4X

\* Self-powered models only.



# Survive-All Series

## Photometrics

The Emergi-lite NEMA-4X Series of emergency lighting sets an impressive new standard for center-to-center path of egress illumination.

Battery units and remote fixtures illuminate an egress path 70-feet long and 3-feet wide.

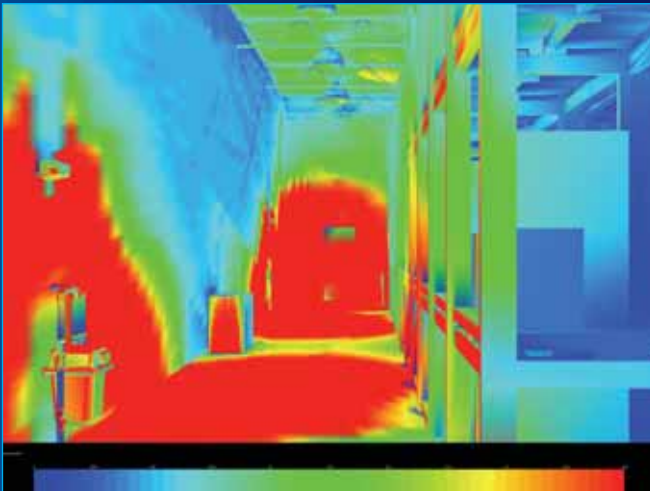
Photometric data based on a 7.5-foot mounting height, minimum 80-50-20 reflectance values and 12V 20W lamps.



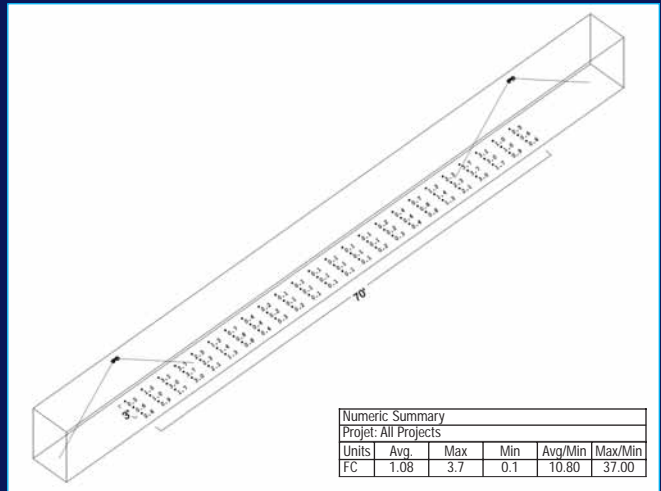
3D image showing installation of two NXM Series battery units and a LPEX600-N combo unit in an industrial application under normal lighting conditions.



3D image lighting rendering showing installation of two NXM Series battery units and a LPEX600-N combo unit in an industrial application under emergency lighting conditions.



3D light level coloured scale image showing egress illumination pattern generated by two NXM Series battery units and a LPEX600-N combo unit.



ISO curve on a point-by-point grid of two NXM Series battery units.

NOTE: Photometric results shown are based on a simulation using the AGI32 software with a 1 foot-candle average and 0.1 foot-candle minimum with a 40:1 maximum-minimum ratio. Emergi-lite assumes no responsibility for local requirements or specific project variables. This is a guideline to be used as a design aid, not a guarantee of any code compliances.

**Thomas & Betts**