



ESLT Series

6, 12 and 24 Volts T-Bar Units

Project/Location:
Contractor:
Date:
Prepared by:

Features

- Rugged steel cabinet with corrosion-resistant undercoating.
- Battery and charger are concealed above the ceiling level in the unit cabinet
- Removable panel provides easy access to battery and circuitry
- Test switch and LED indicators are mounted on the visible bottom panel
- Units mount quickly and easily in standard 2' x 2' or 2' x 4' grids without any additional hardware
- Solid-state pulse-type charger – current-limited, temperature-compensated, short-circuit proof and reverse-polarity protected.
- Unit comes standard with electronic lockout and brownout circuits
- Sealed dust-proof transfer relay, test switch and LED indicator lights
- Long-life, maintenance-free lead acid battery – operates in extreme temperature ranges
- NEXUS® compatible



Typical Specification

Supply and install a complete emergency lighting system as described herein and shown on the drawings.

The Emergi-Lite Smart Diagnostic micro-controller board shall supply the rated load for a minimum of a 1/2 hour to 87.5% of the rated battery voltage. The unit shall be rated 120V or 347V, 60 Hz and be CSA listed. The unit shall have an output of _____ volts.

The charger shall be fully computer tested and its charge voltage factory set to ± 1% tolerance. Chargers with field-adjusted potentiometers are not acceptable. A pulse-type charger shall be employed to promote long battery life and reduce the potential for grid corrosion. The charger shall provide a continuous high charge to recharge the battery, when the battery is at full capacity, the charger will shut-off. Periodically the charger shall provide a pulse of energy to keep the battery topped off. The charger shall be current limited, temperature compensated, short-circuit proof and reverse polarity protected. The unit shall be furnished with an electronic lockout circuit, which will connect the battery when the AC circuit is activated, and an electronic brownout circuit, which will activate the emergency lights when utility power dips below 75% of nominal voltage. A low voltage battery protection circuit shall be provided and will disconnect the load and circuitry from the fused output circuit when the battery reaches the end of discharge. The unit shall self-test for 1 minute every 30 days, 10 minutes on the 6th month and 30 minutes every 12 months. The unit shall be capable of full recharge in compliance with CSA specifications. The unit shall be furnished with sealed dust tight relay, a test switch and diagnostic LED indicator lights to continuously monitor the status of the unit: Battery Failure, Battery Disconnected, Charger Failure, Lamp Failure, Service Alarm, AC "ON", Charger High Rate. The unit shall come complete with tool-less emergency lighting heads requiring no tools to adjust or aim.

The unit shall be Emergi-Lite model: _____.

Power Consumption and Unit Rating

Model Number	AC Specs		Emergency power available for lamps				
			30min	1h00	1h30	2h00	4h00
06ESLT36	120 / 347Vac	0.10 / 0.04 Amp	36	21	15	12	6
06ESLT72		0.22 / 0.08 Amp	72	42	30	24	12
06ESLT108		0.22 / 0.08 Amp	108	63	45	36	18
06ESLT180		0.22 / 0.08 Amp	180	105	75	60	30
12ESLT36		0.09 / 0.03 Amp	36	21	15	12	12
12ESLT72		0.15 / 0.06 Amp	72	42	30	24	6
12ESLT100		0.34 / 0.12 Amp	100	58	42	33	17
12ESLT144		0.40 / 0.14 Amp	144	84	60	48	24
12ESLT216		0.41 / 0.14 Amp	200	117	83	67	33
24ESLT144		0.55 / 0.20 Amp	144	84	60	48	24
24ESLT288		0.67 / 0.23 Amp	288	168	120	96	48

Project/Location:

Contractor:

Date:

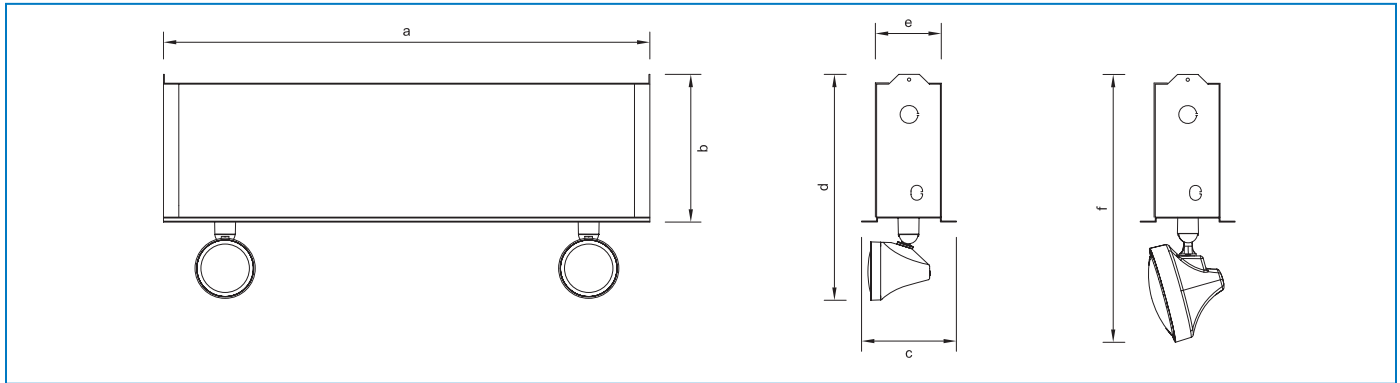
Prepared by:

ESLT Series

6, 12 and 24 Volts T-Bar Units



Dimensions



Dimensions

Dim.	Dimensions	
	Large Cabinet (L)	Small Cabinet (S)
a	23 3/4" [60.3 cm]	23 3/4" [60.3 cm]
b	7 1/4" [18.3 cm]	7 1/4" [18.3 cm]
c	7 7/8" [18.0 cm]	4 7/8" [11.8 cm]
d	11" [28.1 cm]	11" [28.1 cm]
e	5 1/2" [14.4 cm]	3 1/2" [8.2 cm]
f	13" [33.3 cm]	13" [33.3 cm]

Replacement Lamps

Ordering Code	Lamp Type	Voltage-Wattage
570.0016-E	Mini tungsten (MT9W)	6V - 9W
570.0025-E		12V - 9W
570.0045-E		24V - 9W

For the complete list please refer to the Lamp Chart on page 91

Ordering Information

Series	Capacity	Colour	Voltage	Options	Number of Heads	Head Style and Lamp Wattage
06ESLT= 6 volts	36= 36 watts 72= 72 watts 108= 108 watts 180= 180 watts	blank= polar white BK= black	Blank= 120/347Vac input -2= 277vac input -8= 220vac, 50hz input -9= 240vac input	A= ammeter CT= cab-tire D= time delay LW= cab-tire+twist lock plug T= lamp disconnect TB= DC terminal block TXC= remote test transmitter U= auto diagnostic UN= auto diagnostic, non-audible V= voltmeter X= remote test receiver* NEX= NEXUS® system interface** NEXRF= wireless NEXUS® system interface**	/0= no heads /1= one head /2= two heads /3= three heads	M= mini tungsten, 6V, 12V, 24V - 9 watts, wedge base M18= mini tungsten, 12V, 24V - 18 watts, wedge base MQ= mini halogen, 6V, 12V - 8 watts, quartz bi-pin MQ12= mini halogen, 6V, 12V - 12 watts, quartz bi-pin Blank= large tungsten, 6V, 12V, 24V - 9 watts, wedge base -18= large tungsten, 6V, 12V, 24V - 18 watts, wedge base -25= large tungsten, 6V, 12V, 24V - 25 watts, DCB Q8= large halogen, 6V, 12V - 8 watts, quartz bi-pin Q12= large halogen, 6V, 12V - 12 watts, quartz bi-pin Q20= large halogen, 6V, 12V, 24V - 20 watts, quartz bi-pin Q55= large halogen, 12V - 55 watts, quartz bi-pin Q70= large halogen, 24V - 70 watts, quartz H3 MI= mini halogen, 6V - 6 watts, MR16 MJ= mini halogen, 6V - 10 watts, MR16 MK= mini halogen, 12V - 12 watts, MR16 MA= mini halogen, 12V, 24V - 20 watts, MR16 MS= mini halogen, 24V, 12 watts, MR16 S= large tungsten, 6V, 12V - 9 watts, sealed beam S18= large tungsten, 6V, 12V - 18 watts, sealed beam S25= large halogen, 6V, 12V - 25 watts, quartz sealed beam H= large halogen, 6V, 12V - 8 watts, quartz sealed beam H12= large halogen, 6V, 12V - 12 watt, quartz sealed beam H20= large halogen, 6V - 20 watt, quartz sealed beam EF150MA= mini deco halogen, 12V, 20 watt, MR16* EF150MB= mini deco halogen, 12V, 35 watt, MR16* EF150MC= mini deco halogen, 12V, 50 watt, MR16* EF150MD= mini deco halogen, 24V, 20 watt, MR16* EF150ME= mini deco halogen, 24V, 35 watt, MR16* EF150MF= mini deco halogen, 24V, 50 watt, MR16* EF150MS= mini deco halogen, 24V, 12 watt, MR16 LD7= MR16 LED 12V - 4W
12ESLT= 12 volts	36= 36 watts 72= 72 watts 100= 100 watts 144= 144 watts 216= 216 watts					
24ESLT= 24 volts	144= 144 watts 288= 288 watts					

*Remote test transmitter needed.
** Consult your sales representative for options available with the NEXUS® system.

* Supplied with polar white or black cabinet only.

EXAMPLES: 06ESLT108U/2MQ, 12ESLT100U/2M, 24ESLT144U/2EF150MA