

# HP Series

**High-Performance**  
Industrial  
Emergency **LED** Lighting



**EMERGI-LITE®**





# The HP Series offers many advantages in an industrial environment

**Illuminates wide, open areas such as warehouses, manufacturing facilities and industrial corridors**

**Up to 25 ft mounting height with 120 ft center-to center spacing**

The HP Series is designed for industrial applications with high ceilings, open spaces, and low reflectance. Dual LED lighting heads provide an average of 1 FC along a 6-ft wide illumination path as per NFPA101. At a mounting height of 10 ft, the HP Series provides 140 ft center-to-center spacing. At 25 ft high, the HP Series provides an impressive 120 ft center-to-center spacing.

**Stands up to harsh environments with standard NEMA 4X housing and cold weather (-40°F/-40°C) option**

In areas where liquid or windblown dust are a concern, the standard NEMA 4X housing offers industrial-grade protection in applications such as hose-down areas. The cold weather option (CW4) is ideal for cold storage facilities and other freezing environments. All outside hardware is stainless steel for maximum durability.

**Mounts easily on walls, poles, columns, struts, and in a vertical position**

A separate mounting bracket allows easy installation on poles or columns. All units may be wired from the top or side.



Industrial space, 200ft x 200ft x 30ft ceiling height.  
Reflectances 10 / 10 / 10

## Reduces battery testing so that maintenance personnel can focus on revenue-generating machinery

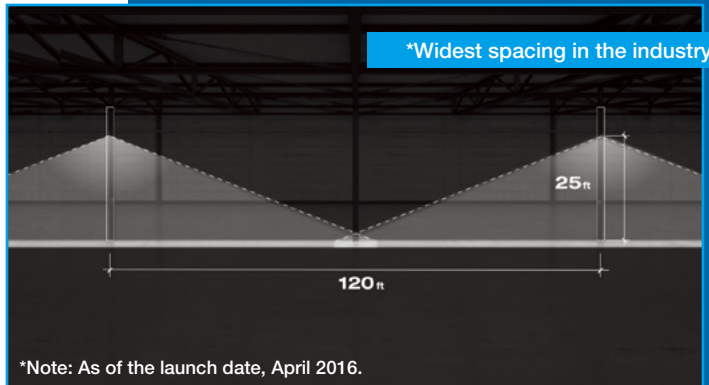
**High-efficiency LEDs out-perform halogen lamps and use smaller battery units or fewer battery units and more remotes**

A 15W LED provides 1300 lumens, out-performing a 50W MR-16IR halogen. Such a high lumen output with low energy requirements means that less power is needed when using LEDs. One 90W battery unit (**24HPN90** model) can power two remote units with 15W dual-head LEDs, giving an excellent remote to battery unit ratio. Fewer battery units makes installation easier and reduces ongoing testing maintenance requirements for a lower total cost of ownership.

All battery units have advanced diagnostics and an infrared remote test control. The universal remote test control allows each battery unit to be tested from up to 30 ft away without climbing a ladder for faster, easier compliance with required testing. Long-lasting LEDs can outlive a building without ever needing replacing.



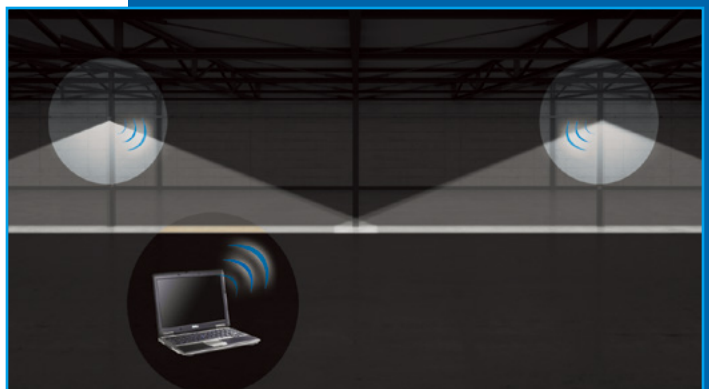
installed at 10ft in the center of the space,  
the spacing is at 140ft



**\*Widest spacing in the industry**

**\*Note: As of the launch date, April 2016.**

installed at 25ft in the center of the space,  
the spacing is at 120ft



**Eliminate the testing requirements with Nexus**

# HP Series

## Features

- Fiberglass gray housing with captive screws. It is designed for heavy-duty industrial applications: indoors, outdoors, hose-down areas, cold-storage facilities etc
- NEMA-4X protection grade against liquids and windblown dust
- Wide ambient temperature range: standard 32°F to 122°F (0°C to 50°C) in high temperature Lead-Calcium and 50°F to 104°F (10°C to 40°C) in Nickel-Cadmium; optional cold-weather -40°F to 122°F (-40°C to 50°C)
- High-efficacy LED emergency heads outperform traditional 50W incandescent lamps
- Innovative head design: four-LED and dual-driver provide illumination even in case of unexpected component failure
- Compact size: 0.46 cubic feet
- Product feature stainless steel on all outside hardware
- Simple and easy to install on walls, poles, columns, struts, on vertical position for poles or columns use mounting bracket (order separately catalog number: PMK1-E)
- May be wired from top or side (see drawing beside for position)
- Standard infrared remote test control included in all models: allow to test the equipment without need to climb a ladder. Functional up to 30 ft distance. Universal, one Remote Test Control may test all units on the job.
- Non-Audible Advanced Diagnostic and Self-Test standard in all models
- Optional NEXUS® central monitoring system
- UL924 Listed
- 5 Year limited warranty

Detailed warranty terms located at:  
[http://www.emergi-lite.com/usa/files/EL\\_Warranty.pdf](http://www.emergi-lite.com/usa/files/EL_Warranty.pdf)

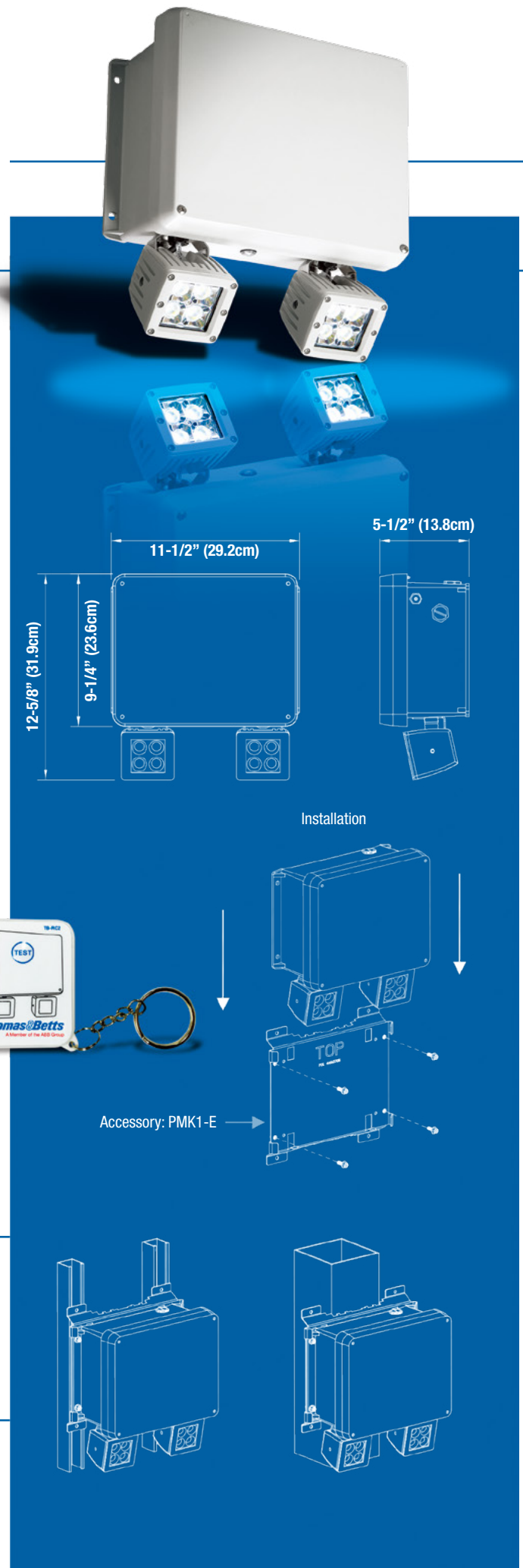
## Power Consumption: maximum current draw

TEMPERATURE	SPECS
Standard temperature range	120/277VAC, 60Hz, 0.30/0.15A
Cold-Weather option	120/277VAC, 60Hz, 0.70/0.35A

## Unit Rating

MODEL	WATTS TO 87-1/2% OF RATED BATTERY VOLTAGE*			
	1-1/2 hrs	2 hrs	3 hrs	4 hrs
12HPM30	30	20	15	10
12HPM60	60	40	30	20
12HPN40	40	36	24	18
24HPN90	90	72	48	36

Note: the cold-weather option is only rated for 90 minutes.





# NEMA-4X, High-Performance Industrial Battery Unit

nexus NEMA-4X



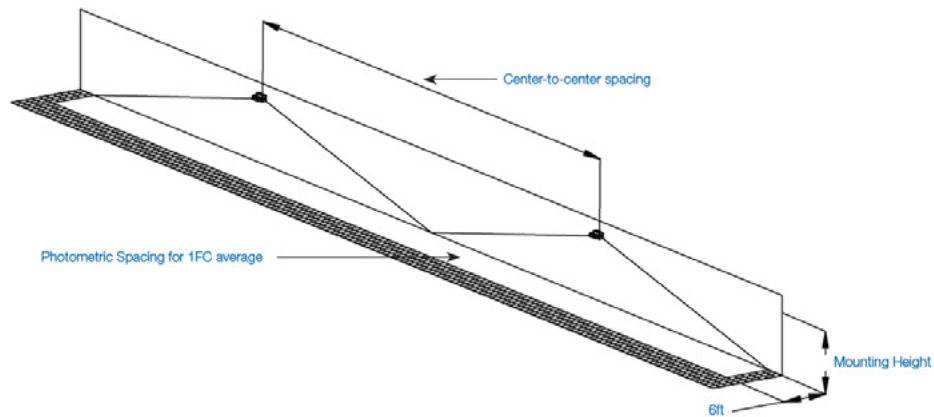
## Photometry Performance

Whether installed indoors or outdoors, the HP Series of LED emergency lights deliver a stable and consistent illumination on the path of egress for a wide range of mounting heights. Depending on the application, one may select and specify among three level of lumen output and cross reference to traditional incandescent emergency lights below.

LED HEAD	POWER	TOTAL LUMENS	OUT-PERFORM THE SPACING OF INCANDESCENT
L6	6W	565	35W PAR36, MR16 Halogen
L10	10W	1000	50W PAR36, MR16 Halogen
L15	15W	1300	50W MR16-IR Halogen

Industrial environment: wall mounted equipment, reflectances: 10/10/10; 6-ft wide illumination path. 200 ft X 200 ft X 30 ft space. Illumination as per NFPA101; Average: 1fc; Min: 0.1fc; Max/min < 40:1

MOUNTING HEIGHT	SPACING CENTER-TO-CENTER (FEET)		
	LAMP L6 / 6W, 565LM	LAMP L10 / 10W, 1000LM	LAMP L15 / 15W, 1300LM
10 ft	80	110	140
15 ft	70	105	135
20 ft	60	100	130
25 ft	50	95	120



## How to Order

SERIES	BATTERY TYPE AND CAPACITY	# OF HEADS	LED HEADS	DIAGNOSTIC	OPTIONS
12HP= High-Performance	M30= 12V-30W, High temperature Lead-Calcium battery, Temperature= 32°F to 122°F [0...50°C]	0= No head 1= One head 2= Two heads	L6= 12-24V, 6W (565 Lumens) L10= 12-24V, 10W (1000 Lumens) L15= 12-24V, 15W (1300 Lumens)	D= Advanced Diagnostic, non-audible* DA= Advanced Diagnostic, audible NEX= NEXUS® wired NEXRF= NEXUS® wireless	CW4= Cold-Weather -40°F [-40°C]* D3= Time Delay 15 minutes RFI= Radio frequency interference filter
	M60= 12V-60W, High temperature Lead-Calcium battery, Temperature= 32°F to 122°F [0...50°C]				
	N40= 12V-40W, Nickel-Cadmium battery, Temperature= 50°F to 104°F [10...40°C]				
24HP= High-Performance	N90= 24V-90W, Nickel-Cadmium battery, Temperature= 50°F to 104°F [10...40°C]			* Standard	* Only 12V equipment

Example: 12HPN402L6DRFI

# HP Series

## NEMA-4X, High-Performance Industrial Remote Unit

### Features

- Die-Cast gray housing and heads designed for heavy-duty industrial applications: indoors, outdoors, hose-down areas, cold-storage facilities etc
- Can be installed in all temperature conditions: -40°F to 131°F (-40°C to 55°C)
- NEMA-4X protection grade against liquids and windblown dust
- High-efficacy LED emergency heads outperform traditional 50W incandescent lamps
- Innovative head design: four-LED and dual-driver provide illumination even in case of unexpected component failure
- Simple and easy to install on walls, poles, columns, struts, on vertical position for poles or columns use mounting bracket (order separately catalog number: PMK1-E)
- UL924 Listed
- 5 Year limited warranty

Detailed warranty terms located at:  
[http://www.emergi-lite.com/usa/files/EL\\_Warranty.pdf](http://www.emergi-lite.com/usa/files/EL_Warranty.pdf)

### Photometry Performance

Whether installed indoors or outdoors, the HP Series of LED emergency lights deliver a stable and consistent illumination on the path of egress for a wide range of mounting heights. Depending on the application, one may select and specify among three levels of lumen output. See cross reference to traditional incandescent emergency lights below.

LED HEAD	POWER	TOTAL LUMENS	OUT-PERFORM THE INCANDESCENT
L6	6W	565	35W PAR36, MR16 Halogen
L10	10W	1000	50W PAR36, MR16 Halogen
L15	15W	1300	50W MR16-IR Halogen

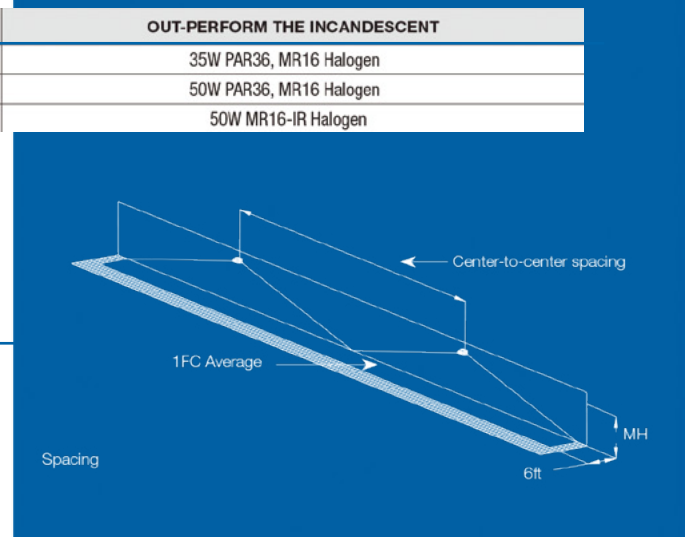
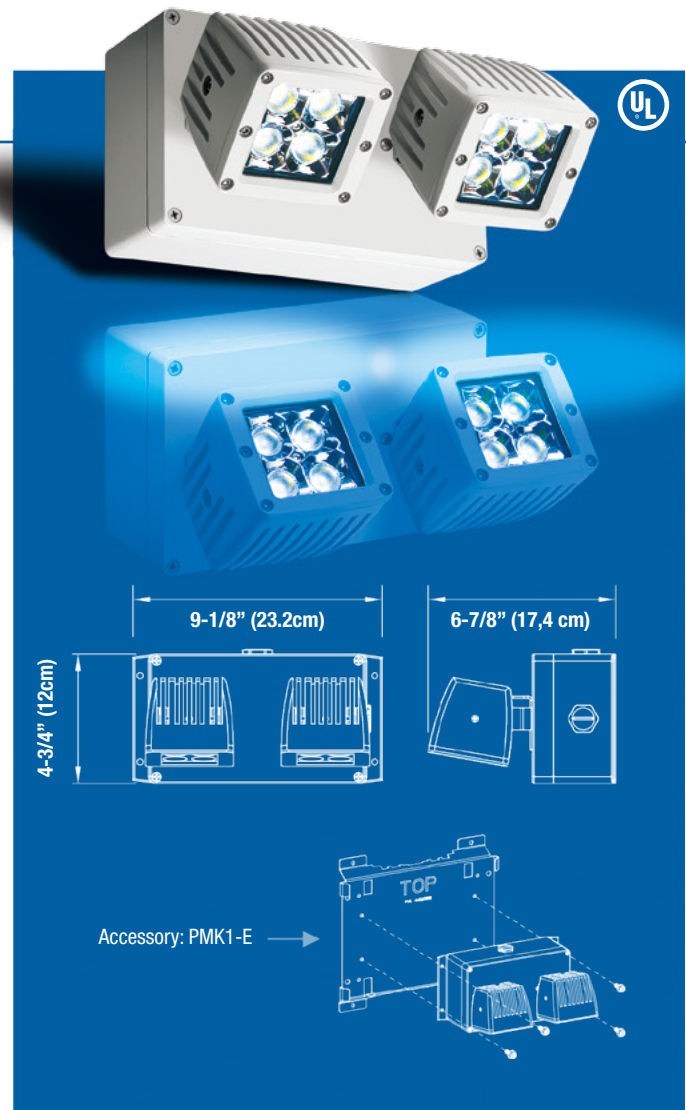
Industrial environment: wall mounted equipment, reflectances: 10/10/10; 6-ft wide illumination path. Illumination as per NFPA101; Average: 1fc; Min: 0.1fc; Max/min < 40:1

MOUNTING HEIGHT	SPACING CENTER-TO-CENTER (FEET)		
	LAMP L6 / 6W, 565LM	LAMP L10 / 10W, 1000LM	LAMP L15 / 15W, 1300LM
10 ft	80	110	140
15 ft	70	105	135
20 ft	60	100	130
25 ft	50	95	120

### How to Order

SERIES	NUMBER OF HEADS	LED HEAD
HPR= High-Performance Remote	D= Double head	L6 = 12-24V – 6W (565 Lumens) L10 = 12-24V – 10W (1000 Lumens) L15 = 12-24V – 15W (1300 Lumens)

Example: HPRDL6



# Easy Installation in Industrial Spaces

## **Mounts easily on walls, struts, poles, columns, and in a vertical position**

Standard mounting brackets included; optional pole mount bracket (PMK1-E) accommodates any square or round post or column.

## **Supports battery unit weight on pole mount bracket**

The battery unit slides into the pole mount bracket so that it stays in position and the weight of the unit is supported during installation.

## **Uses the same brackets for battery units and remotes**

No need to mark which unit goes where for the bracket installers; both units fit the same brackets.

## **Holds door position with grip hinge**

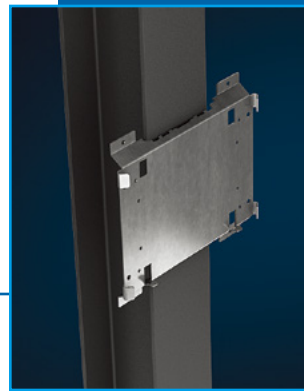
The battery unit access door will hold its position at any angle for easier, hands-free wiring.

## **Closes and locks door with captive screws**

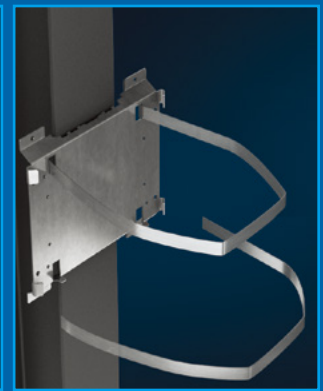
Captive screws close and lock the battery unit door for a perfect NEMA 4X seal.

## **Allows wiring from the top or side**

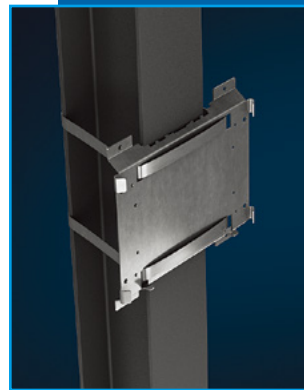
Both the battery unit and remotes feature side wings for different mounting surfaces and feature top and side conduits. All connections are done inside the unit or remote.



**Put mounting bracket  
in place.**



**Insert straps into holes.**



**Tighten up.**



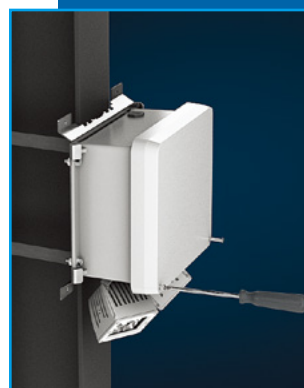
**Insert unit into installed  
mounting bracket and...**



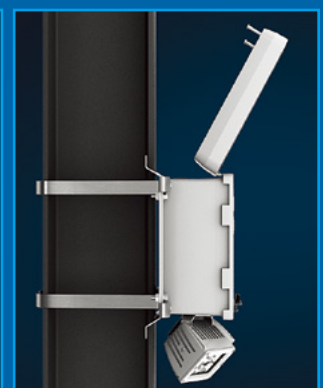
**... slide down.**



**Screw unit  
on mounting bracket.  
(Hardware supplied)**



**Unscrew  
access door screws.**



**Lift up cover.  
It stays in place due to the  
grip system hinge.**



A global manufacturer of emergency lighting and exit signs for the specification markets, Emergi-Lite provides products using innovative technologies designed for performance, reliability and cost efficiency to meet the highest standards in the industry.

[www.emergi-lite.com](http://www.emergi-lite.com)

All information and specifications contained in this catalog sheet are subject to change due to engineer design, errors and omissions. Illustrations and diagrams within this catsheet may vary from actual products.



Thomas & Betts. Your best connection for innovative solutions.