



Thermoplastic Trim

Metal Trim

# GS Series

## 6 Volt Recessed Down Light Ceiling/T-Bar Mounting

Listed to UL924 Standard  
Sealed Maintenance-Free Batteries

- Nickel-Cadmium
- Lead Calcium



### General Information

The GS Series combines the function of a well designed emergency lighting fixture with the style of a desirable looking recessed downlight. Several models and lamp choices provide flexibility in the emergency lighting layout while keeping an aesthetically pleasing look to the interior.

### Standard Features

**Low Profile Trim Ring**, molded in tough thermoplastic, has a semi gloss white finish to complement a variety of ceilings.

**Adjusted Gimbal** directs the light from one PAR 36 size light head.

**Inconspicuously Mounted but Easily Accessed...** the test switch and LED pilot light are located on the side of the lamp ring.

**Easy To Install...** A slide out chassis and two quick-connect plugs make installation and servicing easy.

**PulsePlus Charger...** Takes into account the long periods of inactivity typical of standby emergency equipment. Batteries are kept at full capacity by a pulse charge that allows the battery to cycle continuously. This dramatically increases battery life and performance.

**PulsePlus Charger includes:**

- 120/277 Vac dual input transformer
- Fused Output Circuit
- Temperature Compensated Charger
- Sealed Relay
- Low Voltage Battery Disconnect
- Brownout Protection
- Battery Lockout
- Reverse Polarity Protection
- Current Limited Output

### Electrical

**Power Requirements:** 120/277 Vac, 60 Hz., 0.3/0.15 A.

**Output:** 6 volt, fused output circuit. **Transfer:** dust-tight, sealed relay automatically and instantly energizes lamp load upon failure of AC supply. **LVD:** low voltage battery disconnect circuit automatically shuts down lamp load and circuitry when battery reaches 87 1/2% discharge, preventing deep discharge and permanent damage to the battery. **Lockout:** labor saving electronic circuit automatically connects battery when AC circuit is activated. **Brownout:** close tolerance electronic circuit activates emergency unit when utility power dips below 80-85% of nominal voltage. **Charger:** the Pulse-Plus charging circuit utilizes an integrated circuit which samples the battery in relation to its temperature, state of charge and input voltage fluctuations. The charger is current limited, temperature compensated, short-circuit proof and reverse polarity protected. The equipment is capable of full recharge in compliance with Underwriters Laboratories 924 specifications. **Transformer:** 120/277 Vac. **Controls:** test switch, LED pilot indicator light.

### Optional Features

Description	Add Suffix
Black .....	B

Description	Add Suffix
New York City (12 watt lamp) .....	-NYC*

\* NYC version includes a metal trim and pivot assy.

\*\* NYC version has the test switch and pilot lamp located on the gimbal ring.

**Accessories** (order as a separate item)

Remote Test Switch (metal face plate) .....	RTS
---	-----

Remote Text Switch (plastic face plate) .....	RTS/1
---	-------

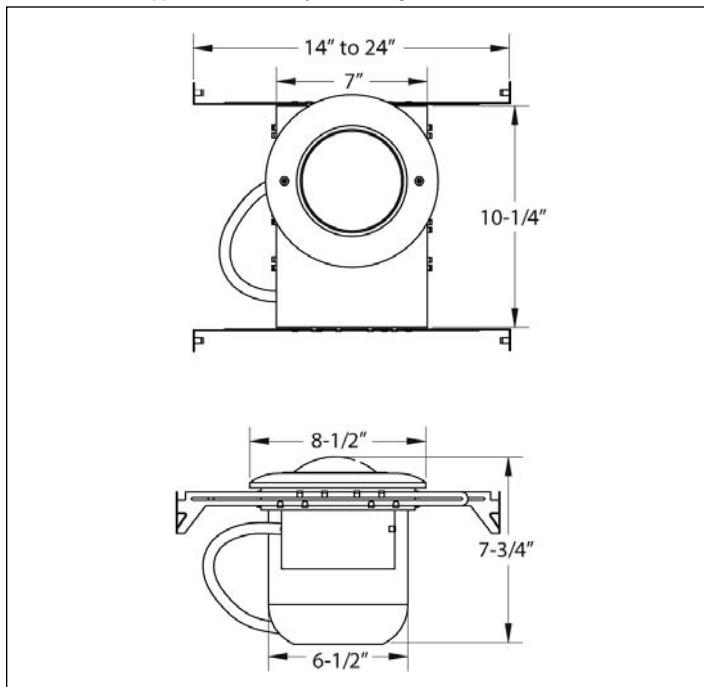
\* The NYC version includes a metal trim and pivot assembly. The test switch and pilot lamp are located on the gimbal ring.

NOTE: Certain option combinations may affect the listing.

Please contact the factory for specifics.

## Outline and Dimensions

\*Dimensions are approximate and subject to change.



## Unit Rating Chart

Each unit is furnished with one 6 volt 9 watt wedge-base lamp. Other wattages available, see lamp data sheet for selection of PAR lamps only.

UNIT EQUIPMENT - NO REMOTE CAPABILITY						
Sealed Maintenance-Free Battery Types	D.C. Voltage	Model Number	*Watts to 87 1/2% of rated battery voltage			
			1 1/2 hrs.	2 hrs.	3 hrs.	4 hrs.
Lead-Calcium	6	GSM10-BH	9	6	-	-
	6	GSE9-BH	9	7	-	-
UNIT EQUIPMENT - WITH REMOTE CAPABILITY						
Nickel-Cadmium	6	GSC18-BH	18	12	9	6
Long Life Lead	6	GSE18-BH	18	11	8	6

\*National Electrical Code Specification  = New York City Approved with -NYC suffix

## Suggested Specification

Supply and install **EMERGI-LITE** Series **GSM** \_\_\_\_\_, or **GSC** \_\_\_\_\_ in 6 volt, with electrically compatible remote fixtures or exit signs as indicated on the plans.

**TYPE GSM** to be supplied with Lead Calcium battery.

**TYPE GSC** to be supplied with long life Nickel-Cadmium battery.

The unit shall supply the rated load for a minimum of 90 minutes to 87-1/2% of rated battery voltage. The unit shall be rated 120/277 Vac, 60 Hz and be UL Listed to Standard 924. The unit charger shall utilize an integrated circuit which samples the battery in relation to its temperature, state of charge and input voltage fluctuations. The charger shall be current limited, temperature compensated, short-circuit proof and reverse polarity protected. The unit shall be furnished with an electronic lockout circuit which will connect the battery when the AC circuit is activated, an electronic brownout circuit which will activate the unit when utility power dips below 80-85% of nominal voltage and low voltage battery protection circuit that will disconnect the load from the battery when it reaches 87-1/2% discharge. The unit shall be capable of full recharge in compliance with UL924 specifications. The unit shall be furnished with sealed dust-tight relay, a test switch and a long life LED pilot indicator light.

The unit shall be designed for fully recessed installation in ceilings, including suspended grid type. Unit shall be constructed of 20 gauge steel back box with a thermoplastic matte white trim ring and gimbal assembly. Unit will be furnished with one (1) 6V 9W PAR 36 size light head.

Fused output terminals shall be provided for ease of remote lamp connections.

\*Supplied with 24" bar hanger standard.

Unit shall be **EMERGI-LITE** catalog number \_\_\_\_\_.

## \*Unit Warranty

Entire unit (excluding lamps and fuses) carries a 3-year Full Warranty.

## \*Battery Warranty

Unit batteries are warranted as follows:

**Sealed Nickel-Cadmium: GSC** – 10-year life expectancy, 5-year Full Warranty, plus 5-year pro-rata warranty.

**Sealed Long-Life Lead: GSE** – 12-year life expectancy, 5-year full warranty, plus 5-year pro-rata warranty.

**Sealed Lead Calcium: GSM** – 8-year life expectancy, 3-year Full Warranty, plus 3-year pro rata warranty.

\*Subject to proper installation and maintenance.

## How To Order

For standard units without options only order Series, Battery, Watts, Heads.

**Example:** GSC18-UA-NYC

Options are added to units by listing suffix at end of model #

Series	Battery Type	Watts for 90 min.	Lamp Option *	Option
GS	C= Nickel-Cadmium	18	UA= 6V 9W Sealed Beam Incandescent  * See lamp data sheet for other lamp wattages.	NYC= Approved Model

Includes standard lamp (570.0016)