

Unit Accessories



Provides protection against tampering, vandalism and accidental damage.

Constructed of UV stabilized, unbreakable, non-corrosive, clear polycarbonate material.

VRS-4X Models complies with NEMA-4X standards and is supplied with a self-adhesive, closed-cell neoprene gasket which forms a bond around the perimeter of the cover to make the unit dust & water tight. Installs easily to wall or flat surface. Mounting holes are predrilled.

Vandal Resistant COVER

Application: ME Series with top mounted heads; PS Series all mountings; X10 or X30 Series LED, Incandescent (wall mounted) AC and AC/DC or Self-Powered exit with no mounted heads; ECL & ECLXN Series LED (wall mounted) AC and AC/DC or Self-Powered; or Preceptor Series LED, Incandescent (wall mounted) AC and AC/DC

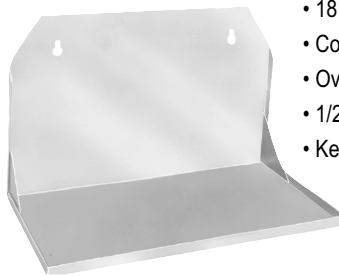
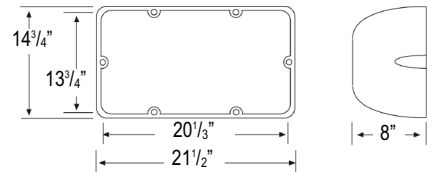
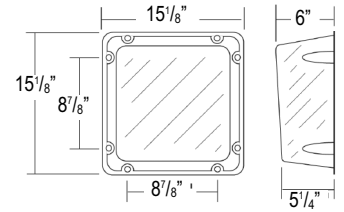
How to Order: VRS or VRS-4X (NEMA-4X)

Vandal Resistant COVER

Application: JS Series (small cabinet) top or front mounted heads; ME Series with top or side mounted heads; or ECC & ECM Series (small cabinet)

How to Order: VRS-BB or VRSBB-4X (NEMA-4X)

Vandal Resistant Covers

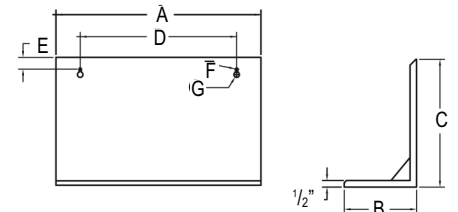


- 18 gauge steel
- Corrosion resistant undercoat
- Oven baked hammertone finish
- 1/2" retaining lip on three sides.
- Keyhole slots for easy mounting

Model	Dimensions (inches)						
	A	B	C	D	E	F	G
MP3	16 ³ / ₈	5 ³ / ₄	10 ⁹ / ₁₆	12 ¹ / ₂	1 ⁵ / ₈	3 ³ / ₁₆	7 ¹ / ₁₆
MP6	17	7 ³ / ₄	12 ¹ / ₄	16	1 ⁵ / ₈	5 ⁵ / ₁₆	5 ⁵ / ₈
MP12	27 ¹ / ₂	7 ³ / ₄	12 ¹ / ₄	16	1 ⁵ / ₈	5 ⁵ / ₁₆	5 ⁵ / ₈
MP24	27 ¹ / ₂	11 ¹ / ₂	12 ¹ / ₄	16	1 ⁵ / ₈	-	-

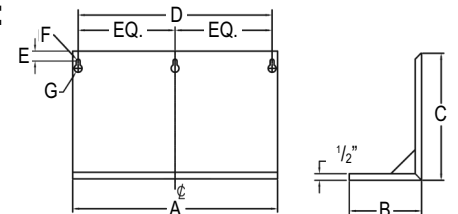
How to Order:

Mounting Platform - **MP3**
 Mounting Platform, gray - **MP3-GY**



How to Order:

Mounting platform (whist) - **MP6, MP12 or MP4**

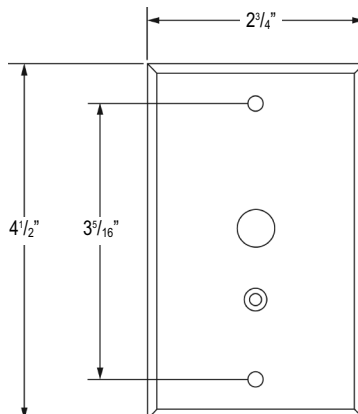


Remote Test Switch

Make testing your ceiling mounted equipment easier with the remote test switch. Compatible with 120 or 277 VAC circuits, the remote test switch will interrupt the line voltage to your equipment by means of a momentary push button switch. AC on/Charge status indicator lamp assures that power is going to your emergency lighting.

How to Order:

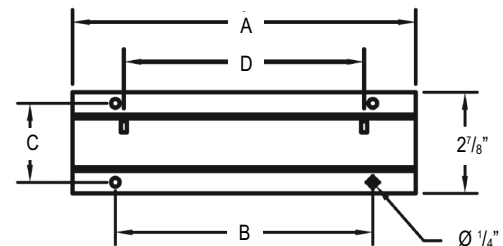
Metal faceplate, chrome - **RTS**
 Plastic faceplate, off white - **RTS/1**



- 16 gauge steel

Mounting Brackets

- Corrosion resistant undercoat
- Oven baked hammertone finish
- Supplied with rubber stand-offs for unit and machine screws to secure unit to bracket.



Model	Dimensions (inches)			
	A	B	C	D
B1	10	7 ³ / ₄	2 ¹ / ₈	7
B2	14 ¹ / ₄	12 ⁵ / ₈	2 ⁹ / ₃₂	11 ³ / ₄

How to Order:

Mounting bracket (whist) - **B1 or B2**