

Remote Emergency Lighting Fixtures

Furnished complete with lamps as specified in the parenthesis. For alternate lamp selection, see lamp data sheet on pages 56-57.

Lamp Series Selection Chart

I = High intensity tungsten (HIT) double contact bayonet base	Z = High intensity incandescent wedge base
U = Sealed beam tungsten	*Available at additional cost
H = BI-PIN halogen*	
X = Sealed beam halogen*	



EF9 Surface Type

Description: Single compact adjustable decorative lighting head- UL Listed thermoplastic
Color: Off-white (black or white optional)
Mounting: Surface (wall or ceiling) direct to 4" octagonal or single-gang box
Lamps: Series: Z or H (See Lamp Series Chart)
To Order: 6 volt-EF9(ZD)-9 watts
 12 volt-EF9(ZF)-9 watts
 24 volt-EF9(ZN)-9 watts



EF9D Surface Type

Description: Twin compact adjustable decorative lighting head- UL Listed thermoplastic
Color: Off-white (black or white optional)
Mounting: Surface (Wall or Ceiling) direct to 4" octagonal or single-gang box
Lamps: Series: Z or H (See Lamp Series Chart)
To Order: 6 volt-EF9(ZD)-9 watts*
 12 volt-EF9(ZF)-9 watts*
 24 volt-EF9(ZN)-9 watts*

*Wattage doubles for "D" 2-lamp version



EF10 Surface Type

Description: Single PAR 18 size indoor lighting head with fully adjustable swivel. All thermoplastic construction
Color: Mist white (black optional)
Mounting: Direct to 4" octagonal electrical box
Lamps: MR16
To Order: 6 volt-EF10(MI)-6 watts
 12 volt-EF10(MA)-20 watts



EF10D Surface Type

Description: Double PAR 18 size indoor lighting heads with fully adjustable swivel. All thermoplastic construction
Color: Mist white (black optional)
Mounting: Direct to 4" octagonal electrical box
Lamps: MR16
To Order: 6 volt-EF10D(MI)-6 watts
 12 volt-EF10D(MA)-20 watts



EF11 Surface Type

Description: Weather resistant adjustable head complete with gasketed aluminum canopy
Color: Black (off-white optional)
Mounting: Direct to 4" octagonal electrical box
Lamps: Series: H, I, U, X or Z (See Lamp Series Chart)
To Order: 6 volt-EF11(ZD)-9 watts
 12 volt-EF11(ZF)-9 watts
 24 volt-EF11(ZN)-9 watts



EF11D Surface Type

Description: Twin weather resistant adjustable head with gasketed aluminum canopy
Color: Black (off-white optional)
Mounting: Direct to 4" octagonal electrical box
Lamps: Series: H, I, U, X or Z (See Lamp Series Chart)
To Order: 6 volt-EF11D(ZD)-9 watts*
 12 volt-EF11D(ZF)-9 watts*
 24 volt-EF11D(ZN)-9 watts*

*Wattage doubles for "D" 2-lamp version



EF13 Recessed Type

Description: Rectangular fixture with diffused lens polycarb
Color: White baked enamel (specify other)
Mounting: Recessed (wall or ceiling)
Dimensions: Trim Plate - 8-1/4" X 4-1/2"
 Back Box - 6-3/8" X 3" X 2-5/8" deep
Lamps: Series: I (See Lamp Series Chart)
To Order: 6 volt-EF13(IA)-9 watts*
 12 volt-EF13(IE)-9 watts*
 24 volt-EF13(II)-9 watts*

Specify (1) or (two) lamps
 *Wattage doubles for 2-lamp version



EF14 Surface Type

Description: Rectangular fixture with diffused lens polycarb
Color: White baked enamel (specify other)
Mounting: Surface (wall or ceiling)
Dimensions: 8-1/4" X 4-1/2" X 3" deep
Lamps: Series: I (See Lamps Series Chart)
To Order: 6 volt-EF14(IA)-9 watts*
 12 volt-EF14(IE)-9 watts*
 24 volt-EF14(II)-9 watts*

Specify (1) or (two) lamps
 *Wattage doubles for 2-lamp version



EF15 Recessed Type

Description: Recessed gimbal ring fixture par 36 - adjustable in two planes to 45°
Color: Off-white thermoplastic
Mounting: Recessed (wall or ceiling)
Dimensions: Trim ring - 8-1/2" diameter
 Back box - 5-3/4" X 4-3/4" deep
 Plaster ring - 9" square (furnished standard)
Lamps: Series: H, I, U, X or Z (See Lamp Series Chart)
To Order: 6 volt-EF15(IA)-9 watts
 12 volt-EF15(IE)-9 watts
 24 volt-EF15(II)-9 watts ("I" HIT lamp only)



EF16 Surface Type

Description: Ceiling or wall mounted par 36 - adjustable in two planes to 45°
Color: Off-white baked enamel (specify others)
Mounting: Surface; three (3) 1/2" conduit knockouts provided
Dimensions: 8-1/2" X 3-1/2" deep
Lamps: Series: H, I, U, X or Z (See Lamp Series Chart)
To Order: 6 volt-EF16(IA)-9 watts
 12 volt-EF16(IE)-9 watts
 24 volt-EF16(II)-9 watts ("I" HIT lamp only)



EF17 Recessed Type

Description: Recessed adjustable eyeball par 36
Color: Brushed aluminum (specify others)
Mounting: Recessed (wall or ceiling)
Dimensions: Trim ring - 8-3/4" diameter
 Back box - 6-3/4" X 3-1/2" deep
Lamps: Series: H, I, U, X or Z (See Lamp Series Chart)
To Order: 6 volt-EF17(IA)-9 watts
 12 volt-EF17(IE)-9 watts
 24 volt-EF17(II)-9 watts ("I" HIT lamp only)



EF18 Surface Type

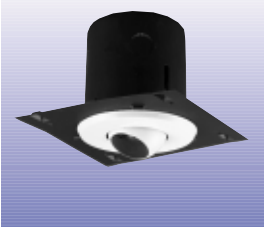
Description: Single adjustable decorative lighting head - all thermoplastic construction
Color: Off-white color (black optional)
Mounting: Direct to 4" octagonal or single-gang box
Lamps: Series: H, I, U, X or Z (See Lamp Series Chart)
To Order: 6 volt-EF18(ZD)-9 watts
 12 volt-EF18(ZF)-9 watts
 24 volt-EF18(ZN)-9 watts



EF18D Surface Type

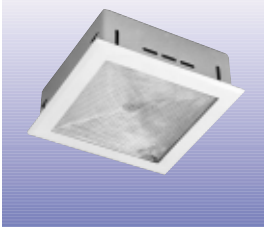
Description: Twin adjustable decorative lighting head - all thermoplastic construction
Color: Off-white color (black optional)
Mounting: Direct to 4" octagonal or single-gang box, round mounting canopy standard
Lamps: Series: H, I, U, X or Z (See Lamp Series Chart)
To Order: 6 volt-EF18D(ZD)-9 watts*
 12 volt-EF18D(ZF)-9 watts*
 24 volt-EF18D(ZN)-9 watts*

*Wattage doubles for "D" 2-lamp version



EF20 Recessed Type

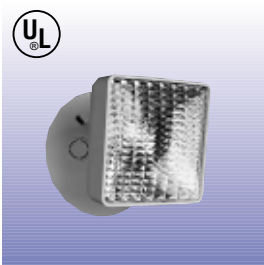
Description: Miniature eyeball fixture; vertical angle adjustable 42°, horizontal rotation 358°
Color: White baked enamel
Mounting: Recessed (wall or ceiling)
Dimensions: Trim ring - 4-3/4" diameter
 Back box - 4" X 4" deep
 Plaster ring - 7" square
Lamps: Series: I (See Lamp Series Chart)
To Order: 6 volt-EF20(IA)-9 watts
 12 volt-EF20(IE)-9 watts
 24 volt-EF20(II)-9 watts ("I" HIT lamp only)



EF21R Recessed Type

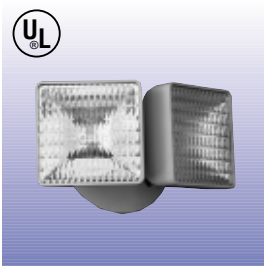
Description: Fully recessed metal decorator square - prismatic diffusing lens - alzak reflector
Color: Off-white baked enamel
Mounting: Recessed (wall or ceiling)
Dimensions: Trim plate - 10-5/8" X 10-5/8"
 Back box - 8-3/4" X 8-3/4" X 3-1/4" deep
Lamps: Series: H, I or Z (See Lamp Series Chart)
To Order: 6 volt-EF21R(HA)-6 watts*
 12 volt-EF21R(HF)-8 watts*
 24 volt-EF21R(II)-9 watts* ("I" HIT lamp only)

Specify one (1) or two (2) lamps
 *Wattage doubles for 2-lamp version



EF23 Surface Type

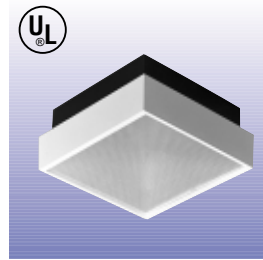
Description: Single adjustable decorative lighting head - all thermoplastic construction
Color: Off-White
Mounting: Direct to 4" octagonal or single-gang box
Lamps: round mounting canopy standard
 Series: H or Z (H = 6, 8 and 12 watt lamps only)
 (Z = 5.4, 9 and 12 watt lamps only)
To Order: 6 volt-EF23(ZP)-5.4 watts
 6 volt-EF23(ZD)-9 watts
 12 volt-EF23(ZF)-9 watts
 12 volt-EF23(ZG)-12 watts



EF23D Surface Type

Description: Twin adjustable decorative lighting head - all thermoplastic construction
Color: Off-white
Mounting: Direct to 4" octagonal or single-gang box
Lamps: round mounting canopy standard
 Series: H or Z (H = 6, 8 and 12 watt lamps only)
 (Z = 5.4, 9 and 12 watt lamps only)
To Order: 6 volt-EF23D(ZP)-5.4 watts*
 6 volt-EF23D(ZD)-9 watts*
 12 volt-EF23D(ZF)-9 watts*
 12 volt-EF23D(ZG)-12 watts*

*Wattage doubles for "D" 2-lamp version



EF24 Surface Type

Description: Decorative square ABS light prismatic diffusing lens - alzak reflector
Color: Front trim: white
 Back box: black
Mounting: Surface (wall or ceiling). For semi-recessed mounting, order EF24R, semi-recessed deep mounting box included (8-1/2" X 8-1/2" X 1-3/4" deep)
Dimensions: 9" X 9" X 4" deep
Lamps: Series: H, I, or Z (See Lamp Series Chart)
To Order: 6 volt-EF24(IA)-6 watts*
 12 volt-EF24(IE)-8 watts*
 24 volt-EF24(II)-9 watts* ("I" HIT lamp only)

Specify one (1) or two (2) lamps
 *Wattage doubles for 2-lamp version



EF28 Surface Type

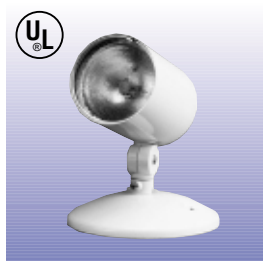
Description: Single metal housing head with fully adjustable swivel
Color: Head: chrome finish (off-white optional)
Mounting: Surface; 1 MPC - 1 plate supplied
Dimensions: Mounting plate 2-1/2" X 4-1/4"
Lamps: Series: H, I, U, X or Z (See Lamp Series Chart)
To Order: 6 volt-EF28(IA)-6 watts
 12 volt-EF28(IE)-9 watts
 24 volt-EF28(II)-9 watts



EF28D Surface Type

Description: Double metal housing heads with fully adjustable swivel
Color: Head: chrome finish (off-white optional)
Mounting: Surface; 3 MPC - 2 plate supplied
Dimensions: Mounting plate 6-7/16" X 4-1/2"
Lamps: Series: H, I, U, X or Z (See Lamp Series Chart)
To Order: 6 volt-EF28D*(IA)-6 watts*
 12 volt-EF28D*(IE)-9 watts*
 24 volt-EF28D*(II)-9 watts*

*Wattage doubles for "D" 2-lamp version
 **Add suffix T for triple heads (not shown). Wattage triple.



EF32 Surface Type

Description: Single miniature 3" diameter X 4-1/4" fully adjustable aluminum cylinder complete with matching round mounting plate
Color: Off-white baked enamel finish standard (black -BL optional)
Mounting: Direct to 4" octagonal box
Lamps: "H" Bi-PIN halogen lamp (6 or 12 VDC only)
To Order: 6 volt-EF32(HA)-6 watts
 12 volt-EF32(HF)-8 watts



EF32D Surface Type

Description: Double miniature 3" diameter X 4-1/4" fully adjustable aluminum cylinder complete with matching round mounting plate
Color: Off-white baked enamel finish standard (black -BL optional)
Mounting: Direct to 4" octagonal box
Lamps: "H" Bi-PIN halogen lamp (6 or 12 VDC only)
To Order: 6 volt-EF32D(HA)-6 watts*
 12 volt-EF32D(HF)-8 watts*

*Wattage doubles for "D" 2-lamp version



EF35 Recessed Type

Description: Gasketed, fully recessed, with fresnel lens; suitable for damp location
Color: Off-white
Mounting: Ceiling fully recessed; split plaster ring available (add suffix -PR)
Dimensions: 7-1/4" deep 6-7/8" diameter ceiling opening
Lamps: Series: H, I or Z (See Lamp Series Chart)
To Order: 6 volt-EF35(IA)-9 watts
 12 volt-EF35(IE)-9 watts
 24 volt-EF35(II)-9 watts