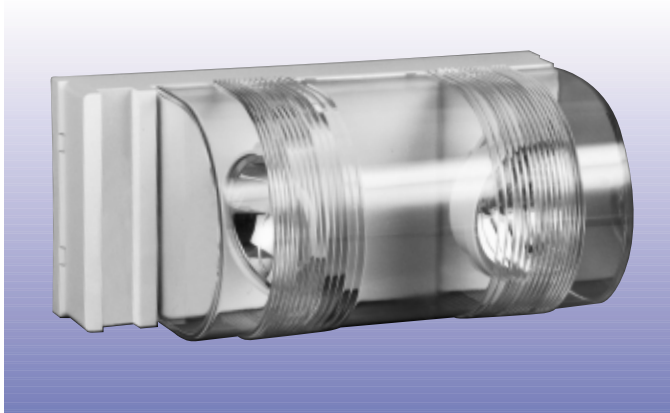


# Remote Emergency Lighting Fixtures

## PRO-2 Remote Series



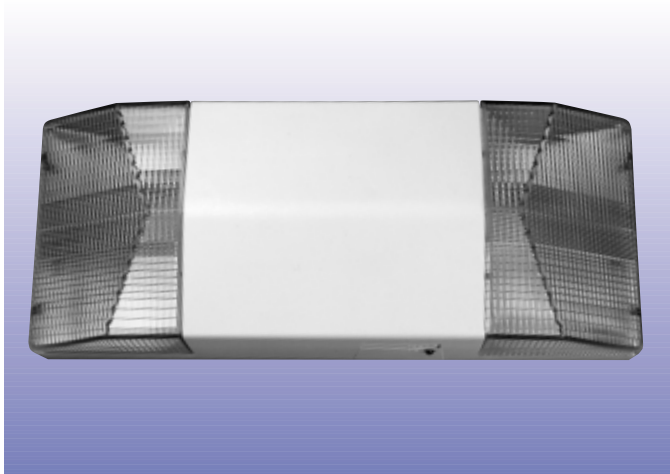
### Standard Features

The **Provider Series** is the new look in emergency lighting design. Its sleek low profile thermoplastic body and transparent polycarbonate lamp shield combine to make a contemporary style that's just right for today's aesthetic demands. Finished in off-white, the provider will compliment a variety of interiors in stores, offices, theaters, restaurants and shopping malls. Provider is versatile too, its body, measuring only 11" X 5" can be mounted in any orientation on wall or ceiling.

### How To Order

	<b>Model</b>
6 volt 10.8 total unit wattage.....	<b>6PRO-10</b>
12 volt 18 total unit wattage.....	<b>12PRO-2(ZF)</b>
24 volt 18 total unit wattage.....	<b>24PRO-2(ZN)</b>

## DLM-2 Remote Series



### Standard Features

Two flush mounted fresnel lenses add a contemporary, elegant style to the DLM-2. Constructed of thermoplastic, its compact design measures only 5 inches by 12 <sup>3</sup>/<sub>8</sub> inches. The DLM-2 Series has a lightly textured, off-white finish and is compact in design which blends well with a variety of architectural surfaces. No screws or other mounting hardware is visible. It can be mounted in any orientation on walls or ceilings.

### How To Order

	<b>Model</b>
6 volt 10.8 total unit wattage.....	<b>6DLM-10</b>
6 volt 14.4 total unit wattage.....	<b>6DLM-14</b>

## ECL Remote Series



### Standard Features

The Escort is a versatile exit sign, featuring an all-in-one design. The ECL exit sign includes two face plates, a backplate and a canopy for universal mounting. Its LED light source consumes less than 2 watts of energy. The exit housing is molded in tough high impact thermoplastic with a scratch resistant suede finish. It's off white or optional black color blends well with a variety of interiors and matches other Escort family emergency units and remote heads.

### How To Order

	<b>Model</b>
Universal Mount, 6, 12, 24, 36 and 48 Volt DC Remote, 120/277, Red LED exit sign .....	<b>ECL4RDC</b>