

## GS Series

### 6 Volt Recessed Down Light



#### Housing

- Low profile polycarbonate white trim
- Fully recessed steel backbox

#### Mounting

- Ceiling or wall recessed mount

#### Lamp Type

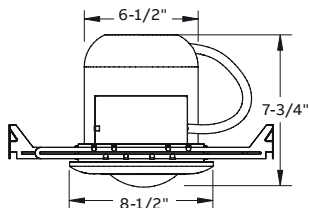
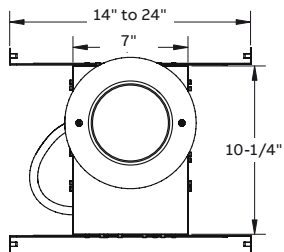
- 6V 10 watt wedge-base incandescent lamp

#### Electronics

- Pulse plus charger
- Low voltage disconnect
- Automatic brownout protection
- Battery lock-out
- Fused output circuit
- 120/277 60Hz

#### Dimensions

Dimensions are approximate and subject to change.



#### Sealed maintenance-free battery

- 6V lead-calcium battery

#### Approvals

- UL 924 listed

#### Warranty (subject to proper installation and maintenance)

- Unit has a three-year warranty
- Detailed warranty terms located at:  
[www.emergi-lite.com/usa/files/EL\\_Warranty.pdf](http://www.emergi-lite.com/usa/files/EL_Warranty.pdf)

#### Accessories (order as a separate item)

Description	Suffix
Remote test switch (metal face plate)	RTS
Remote test switch (plastic face plate)	RTS-1

#### Power consumption

Sealed maintenance-free battery types	D.C. voltage	Model number	Battery capacity in watts				A.C. voltage	
			1-1/2 hrs	2 hrs	3 hrs	4 hrs	Units dual voltage <sup>1</sup>	Current max.
Lead-calcium	6	GSM10-BH	10	8	-	-	120VAC	.3A

<sup>1</sup>Stand-by power consumption is 50% lower for lead-calcium batteries.

#### How to order

Color	Series	Battery type	Lamp option	Mounting option
Blank= White	GS= Series	M10= 10W lead-calcium	Wedge base 9W standard	BH= Bar hanger (standard)

Example: GSM10BH